



Sage 100 ERP Newsletter

From Business Computer Associates, Inc.

Nov - Dec 2013

In This Issue

Page 1

Introducing the New Sage Mobile Apps

Page 2

New Tool Simplifies FRx to Sage Intelligence Reporting Tree Conversion

Horizons Sage 100 ERP User Conference

Business Computer Associates, Inc.

Type of Business

Enterprise Resource Planner, IT Service Provider

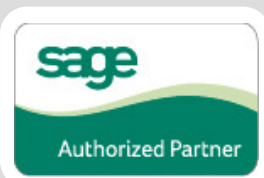
Location

Doral, FL

Contact

305.477.9515

www.bcainc.com



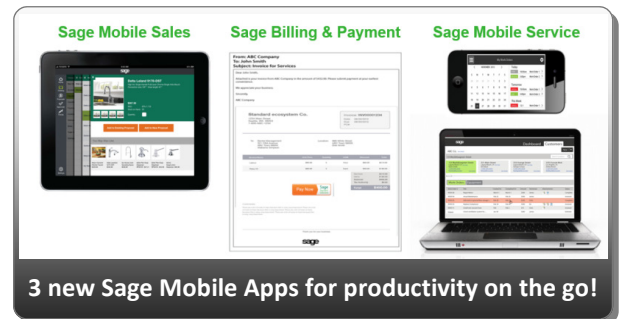
INTRODUCING THE NEW SAGE MOBILE APPS

Sage recently unveiled 3 new mobile apps designed to help businesses improve customer service and cash flow. These new cloud-based solutions are affordable, easy-to-implement, and integrate directly with your Sage 100 ERP system. Let's take a closer look.

Sage Mobile Sales

This native iPad app provides your sales team with the information they need to close a sale at the customer site. **Sage Mobile Sales** enables you to process quotes and orders, take payments, and collect signatures while out in the field. What's more, it automatically links to your Sage 100 ERP system so you can:

- Access real-time inventory availability anywhere and anytime
- Review recent orders with your customer and view/edit their information instantly
- Enter orders on-site and accept immediate payment using your iPad



3 new Sage Mobile Apps for productivity on the go!

Sage Mobile Service

With **Sage Mobile Service**, field technicians can use an iPhone to schedule work, optimize routes, access customer information (i.e. service history, work orders & approved estimates), take before and after photos, and even accept payments - all while on-site. With this new app, you can also:

- Email estimates and receipts so everyone stays informed
- Modify work orders for **actual** hours & work performed and get customer signoff onsite
- Access Sage 100 ERP information on the fly, get paid faster, and increase cash flow

Sage Billing and Payment

This new subscription-based app allows you to easily process electronic customer payments - which reduces paper costs, saves time, shortens the A/R cycle, and gets you paid faster. Payments can be processed by credit card or ACH, making it easier for customers to do business with you.

Sage Billing and Payment also provides your customers with a 24/7 web portal so they can manage their accounts and make payments online, on their own time. You also get an online dashboard with the ability to quickly re-send outstanding invoices and view invoice delivery history.

Sage Data Cloud - The Best of Both Worlds

All these new Sage Mobile Apps are connected through the Sage Data Cloud which is hosted in Microsoft Azure and connects to your Sage 100 ERP system. Sage Data Cloud is the glue that connects your on-premise ERP software with a world of add-on cloud applications without the need for configuring web servers or installing special hardware.



[Contact us](#) with your questions or [go online](#) to learn more about the new Sage Mobile Apps.

FRx Report Conversion Even Easier Now!

New Reporting Tree Conversion Utility

We previously introduced you to the Sage Intelligence Report Designer Add-in - an important tool in converting your old FRx reports to Sage Intelligence reports. The only time-consuming task that remained was the process of manually converting your reporting trees - but no more!

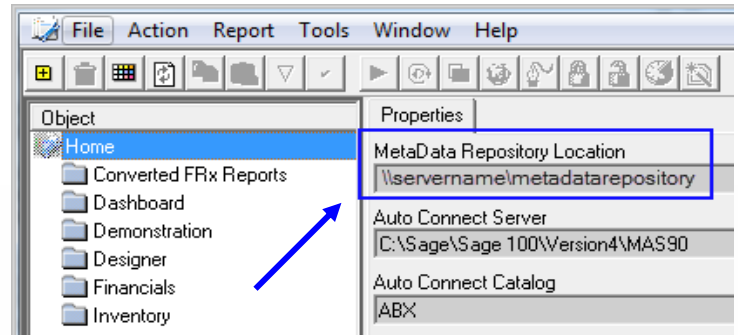
A new **FRx Reporting Tree Conversion Utility** converts FRx Reporting Trees into Sage Intelligence Reporting Trees. It's a great complement to the Report Designer Add-in and together, they significantly speed up the conversion process.

Using the Reporting Tree Utility

Following are the steps for using the new FRx Reporting Tree Conversion Utility.

1. Download the [FRx reporting tree utility](#) and related conversion guide for Sage 100 ERP.
NOTE: The link above initiates a download of the **zip folder** containing the utility files and related documents.
2. Extract the **FRxTreeConverter.zip** files into a new folder.
3. Inside the new folder, run **FRxTreeConverter.exe**
4. Browse to the location of and select the **FRx Specification Set** you would like to load FRx reporting trees from.
5. Press **OK**
6. You will be prompted to select an **output location** for your FRx Reporting Trees. Browse to the location of your **Sage Intelligence MetaData Repository** and press **OK**.

NOTE: You can determine the location of this folder by opening the Report Manager module and looking at the folder path specified for the MetaData Repository Location as shown in the following screenshot:



7. All reporting trees associated with your FRx reports will be converted and available for use in Sage Intelligence.

Getting Help and Other Important Details

This utility will only convert FRx Reporting Trees which are associated with FRx Reports. Any disassociated Reporting Trees will be ignored during conversion. Only Microsoft **FRx 6.7 Service Pack 11** specification sets are supported.



[Contact us](#) if you'd like help converting your reports or download the [FRx to Sage Intelligence Conversion Guide for Sage 100 ERP \(PDF\)](#).

HORIZONS SAGE 100 ERP USER CONFERENCE

The Horizons Conference brings together Sage 100 ERP (MAS 90/200) Clients who want to stay informed on all the latest Sage 100 Product Updates. Clients who attend the Conference will have dedicated education tracks focused on Sage Module upgrades as well as any updates on the Sage 100 ERP Enhancements.

Gain valuable insights on how to maximize the use of your Sage 100 ERP Solution by attending this year's conference.

To register online please visit us at:



bcainc.com/horizons-2013-user-conference

We focus on your technology, you focus on your business

With over 20 years in the industry, BCA has worked with progressive companies and organizations that know the value of technology and want to get the most out of their Enterprise Resource Planning (ERP) investments.



www.bcainc.com

8813 NW 23 Street

| Miami, FL 33172

| (305) 477-9515